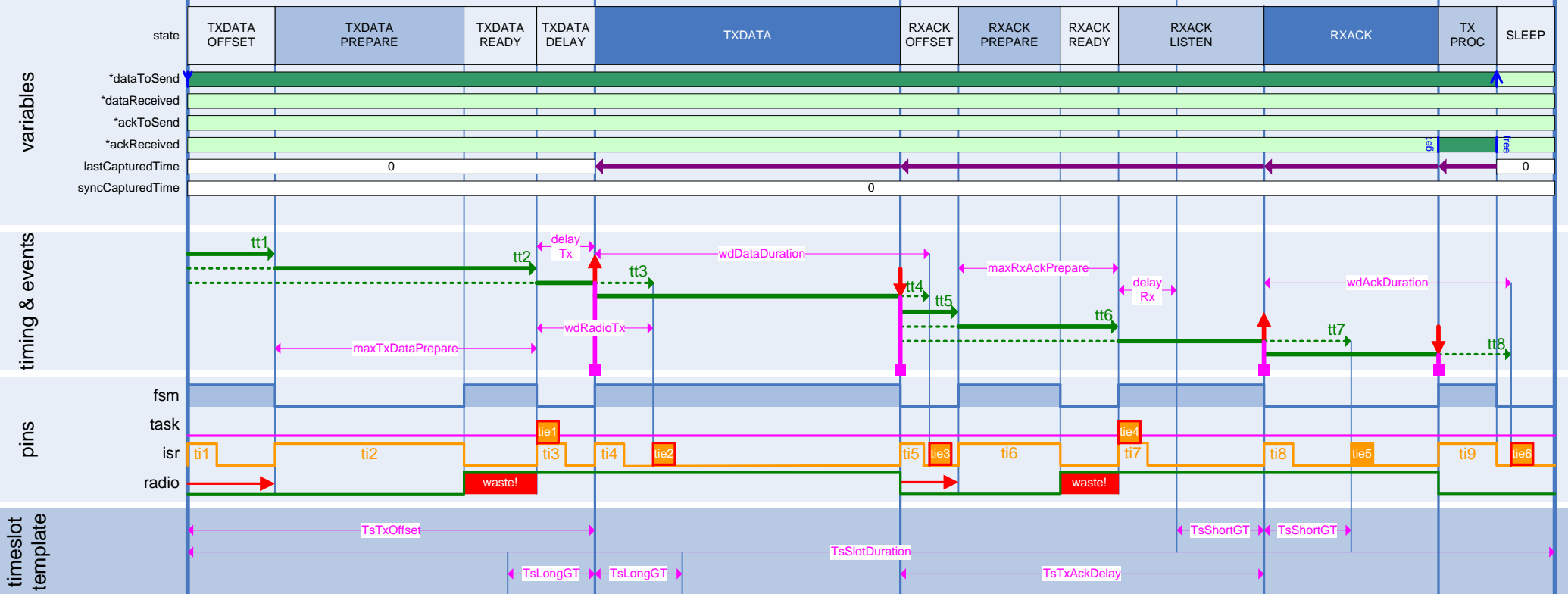
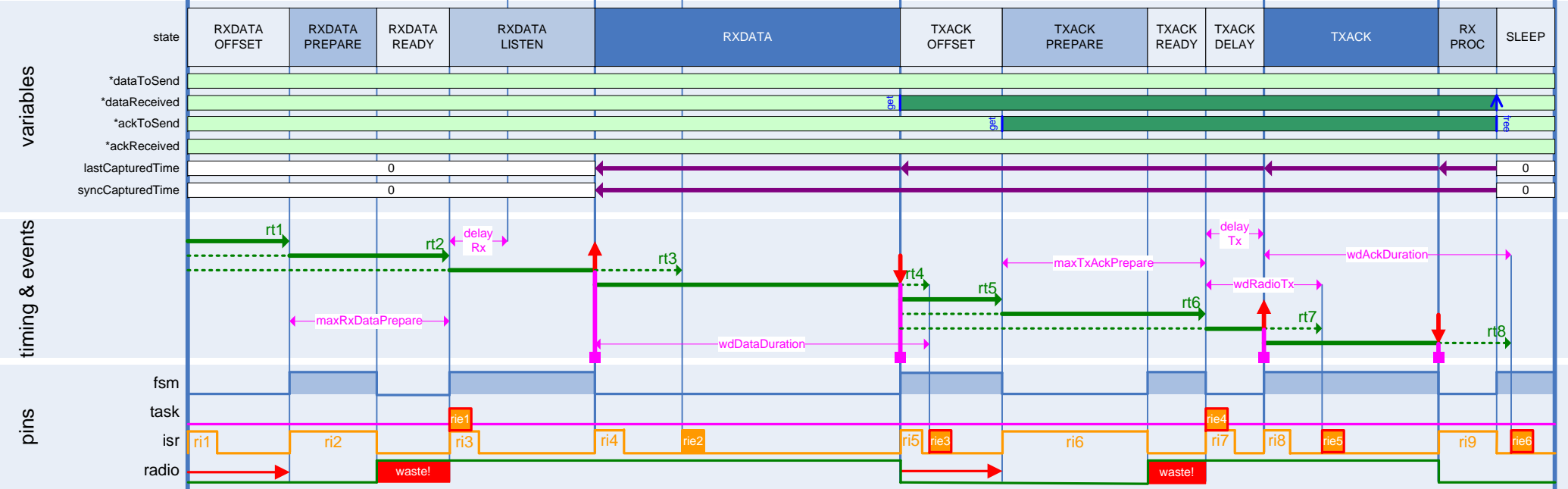




TX




RX



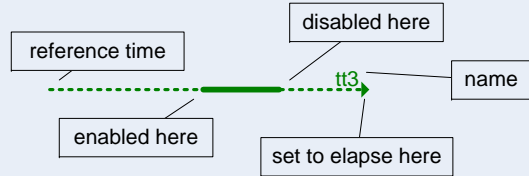
 : packet pointer points to a packet

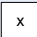
 : packet pointer points to NULL


Capture timer representation:  keep value


capture here


Compare timer representation:





 : constant value of 'x'


 : capture time here


 : start of frame event received from radio


 : end of frame event received from radio


 : exception activity with error logging


 : exception activity (not an error)


 : normal activity


 : wasted energy

 : push timing here to reduce wasted energy

 : get packet from transmit queue

 : send packet to upper layer

 : get an empty packet buffer

 : free a packet buffer