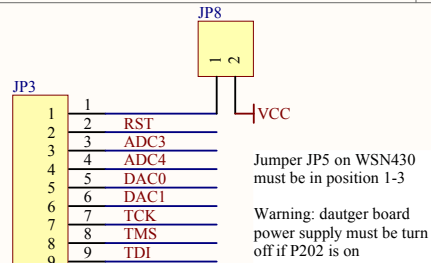
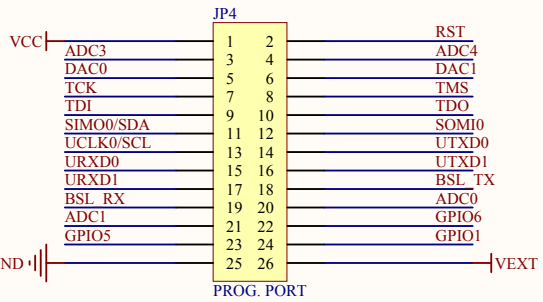
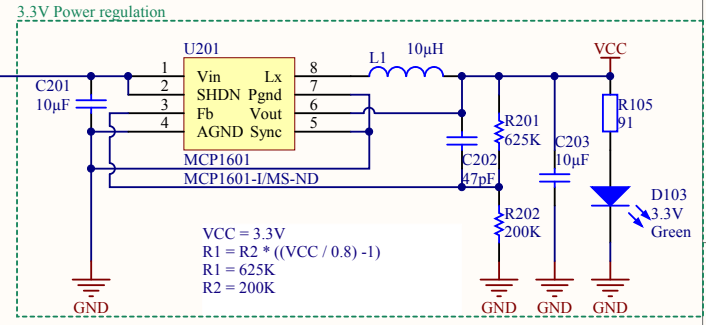
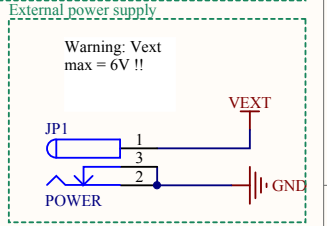
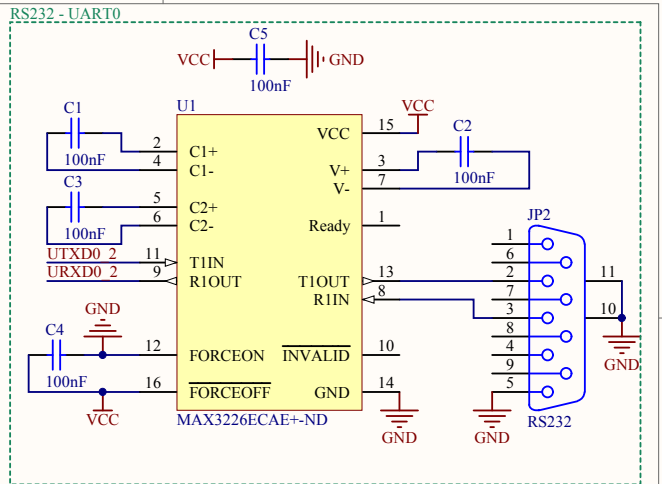
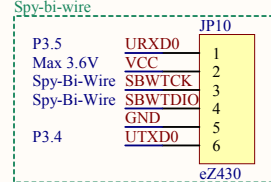
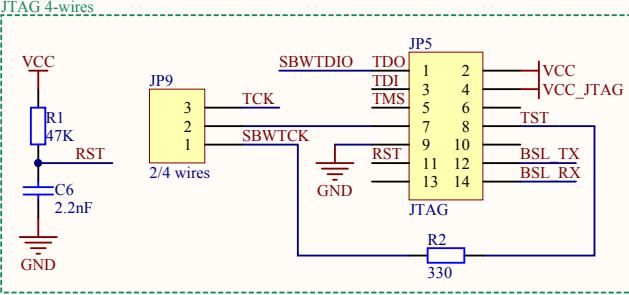
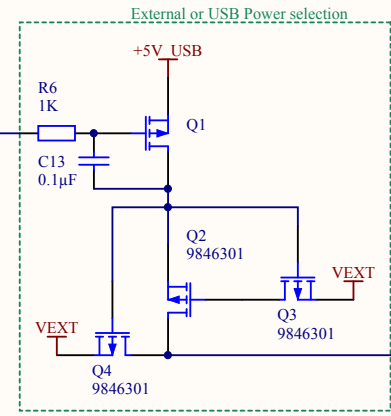
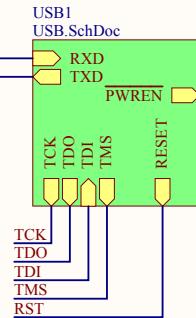
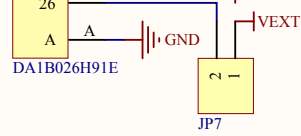
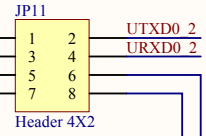


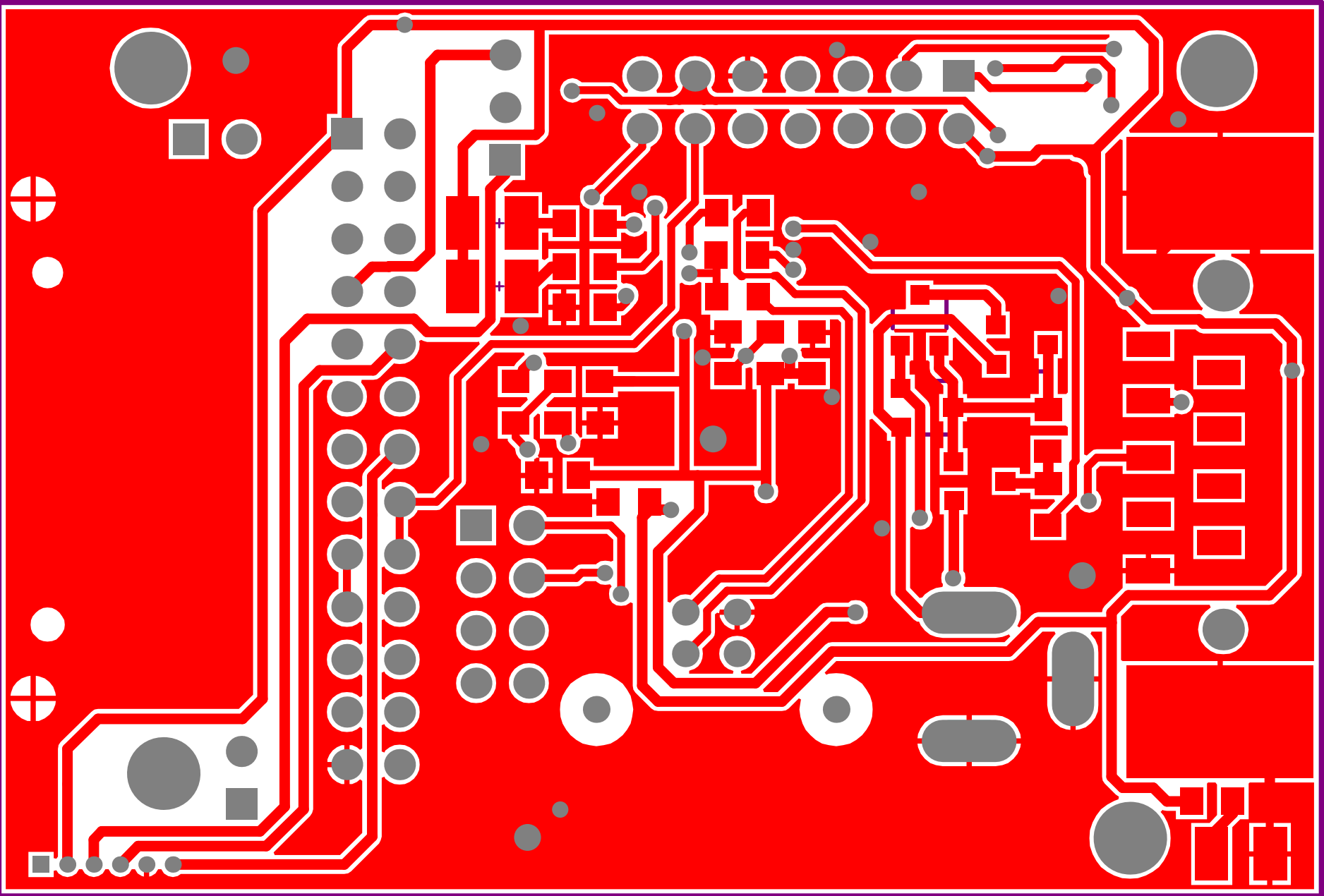
Title		
Size	Number	Revision
A4		
Date:	01/09/2010	Sheet of
File:	\\.\USB.SchDoc	Drawn By:

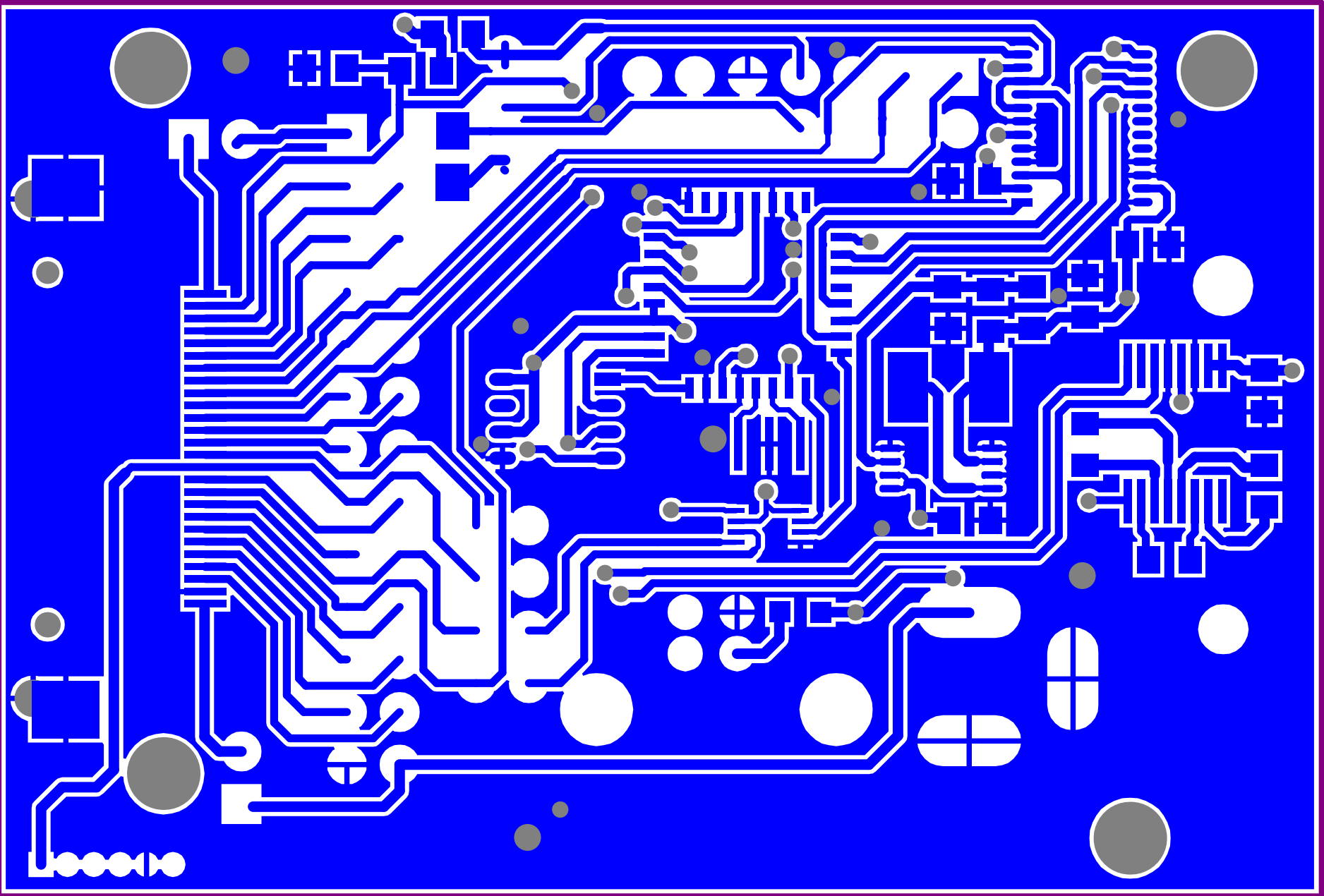


Jumper JP5 on WSN430 must be in position 1-3
Warning: daughter board power supply must be turned off if P202 is on



Title		
Size	Number	Revision
A4		
Date:	01/09/2010	Sheet of
File:	\\.\wsn430-dock.SchDoc	Drawn By:





MSN430



eZ430

VCC

EXT

GPI05

ADC1

BSL_RX

RXD1

RXD0

SCL

SDA

TDI

TCK

DAC0

ADC3

JP4

GND

GPI06
GPI01

UART1

C14

C11

C8

R10

RX

BSL_TX

TXDO

SOMI

TX

SBW JTAG

JP6

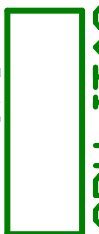
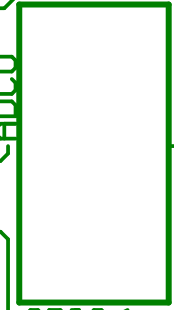
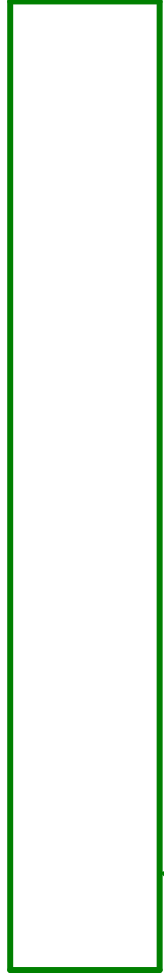
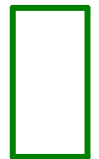
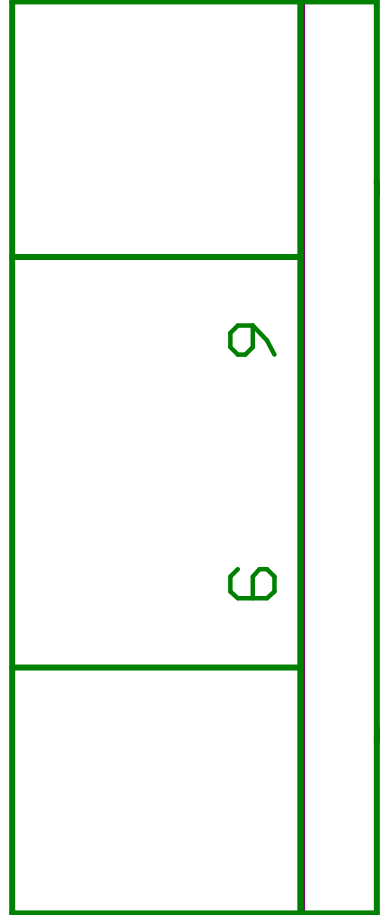
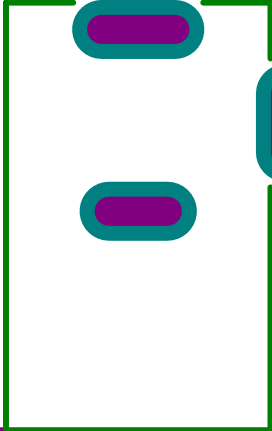
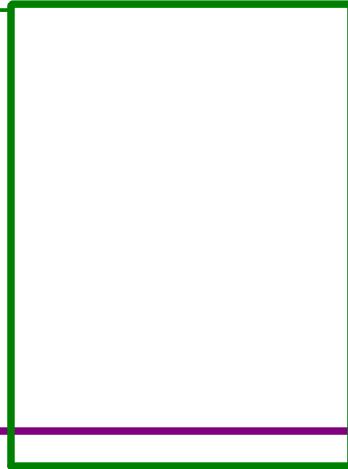
JP1

6V max

JP5
JTAG

RS232

R105
D103



R3

R4

C10

C9

R7

C7

Q1

Q2

Q3

Q4

R12

R8

R13

R6

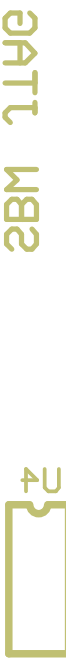
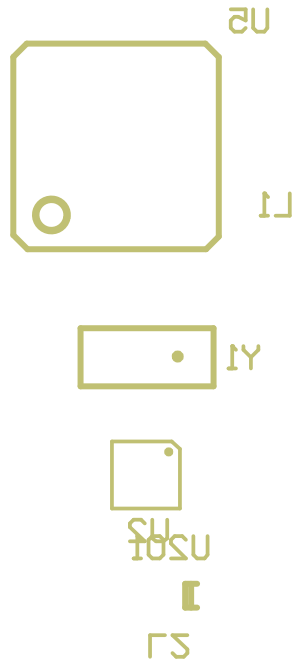
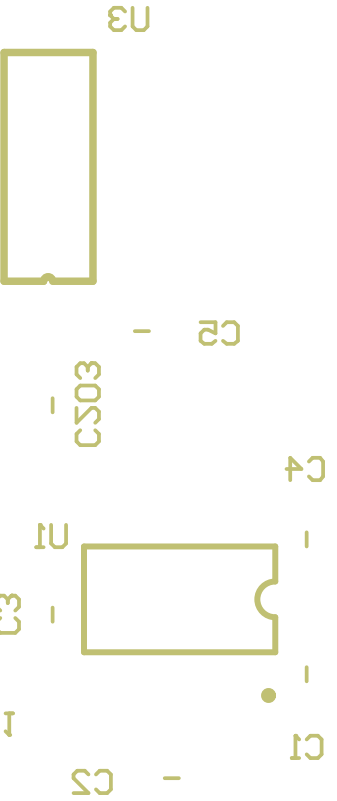
C13

9

6

R105

D103



QATTU MB2
BR2

